

## Isolated Areas of Distress (Attainment Counties Only)

In accordance with 40 U.S.C. § 15702, the SCRC will designate as isolated areas of distress, areas located in counties designated as attainment counties that have high rates of poverty, unemployment, or outmigration.

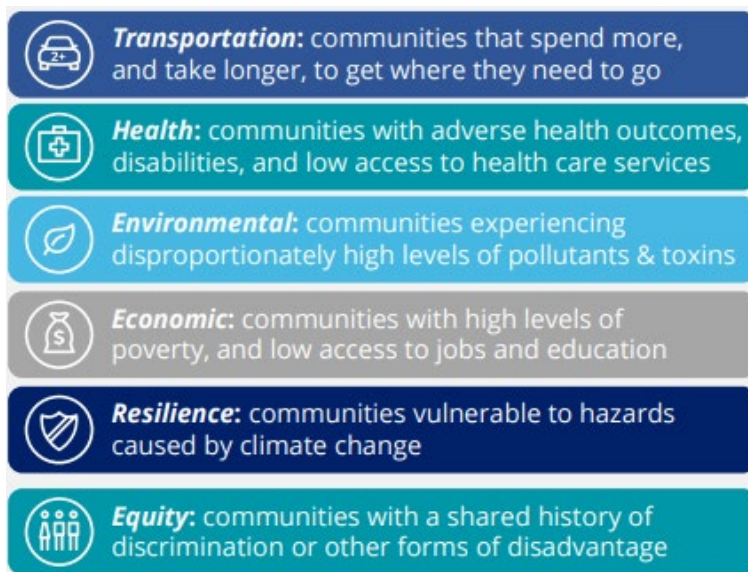
### Methodology

In determining isolated areas of distress, SCRC used the following three factors and applied them to attainment county census tracts:

1. census tracts at or above the U.S. median poverty rate of 12.6%;
2. census tracts below the U.S. median household income of \$46,244, and
3. census tracts designated as historical disadvantaged communities.

To be classified as an isolated area of distress, all three conditions must be met. All data came from the Census Bureau's American Community Survey 2021 5-Year Estimates, except for the Historically Disadvantaged Communities classification that is sourced from the U.S. Department of Transportation (USDOT) and defined by utilizing the principles of the Justice40 Initiative. The Justice40 Initiative was created by Executive Order 14008, Tackling the Climate Crisis at Home and Abroad. Justice40 sets a goal of certain federal investments flowing to disadvantaged communities.

USDOT used the six categories below to assess the overall level of disadvantage of communities:



Source: US Dept of Transportation, Justice40 Fact Sheet

**Table: Number of Isolated Areas of Distress by State**

	# of Attainment Census Tracts	# of Attainment Distressed Census Tracts	Percent Distressed
<b>Alabama</b>	18	1	5.6%
<b>Florida</b>	652	30	4.6%
<b>Georgia</b>	296	39	13.8%
<b>Mississippi</b>	0	0	0.0%
<b>North Carolina</b>	487	39	8.0%
<b>South Carolina</b>	211	23	10.9%
<b>Virginia</b>	1024	7	0.7%
<b>Total</b>	<b>2688</b>	<b>139</b>	<b>5.2%</b>

Census Tract Look Up: [Click Here](#)